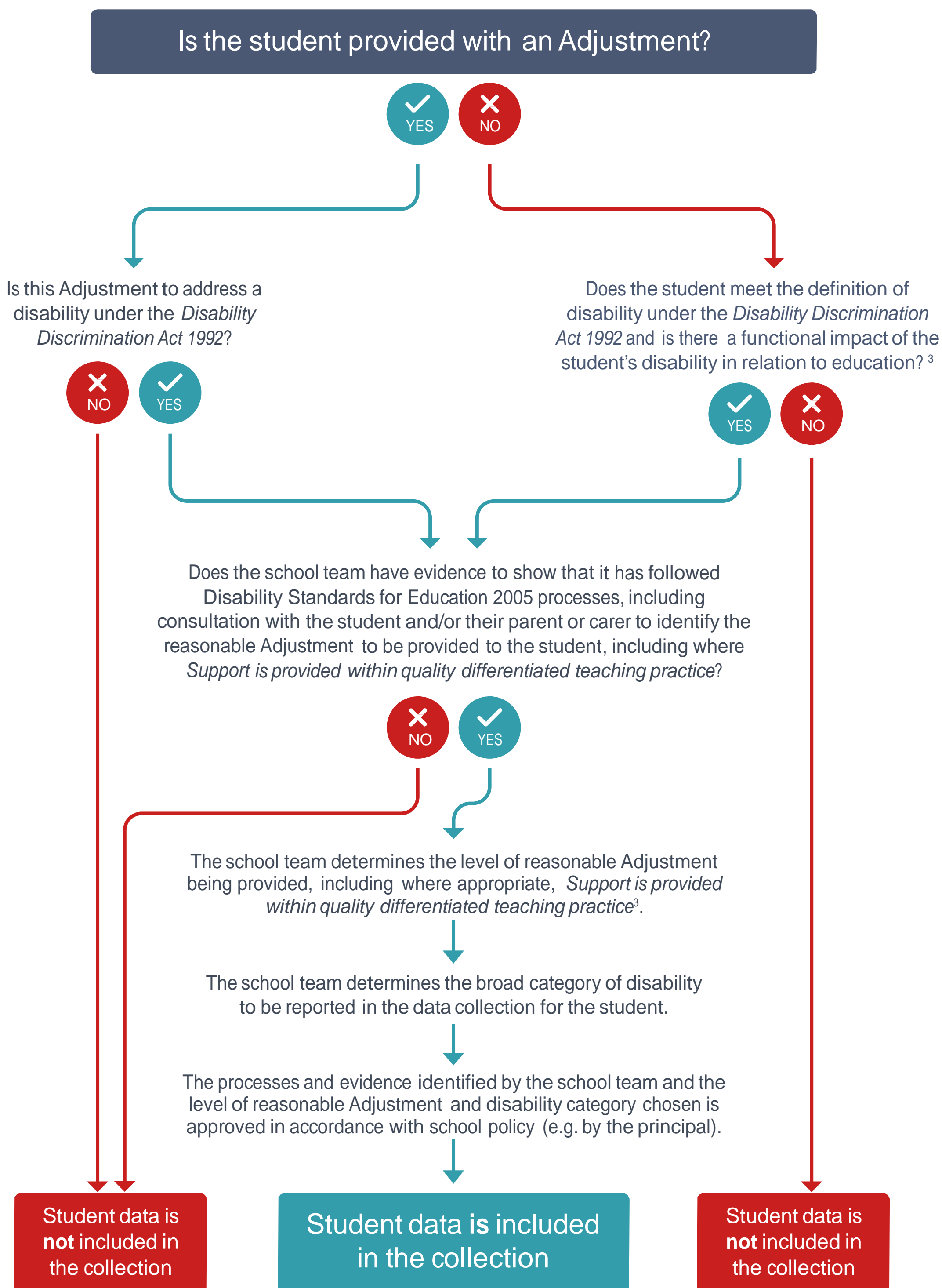


# The National Data Collection Model Diagram

Throughout the school year school teams use evidence, including discussions with parents/carers, to inform decisions about the Adjustments that they make for students with disability.

For this data collection, you should have evidence that shows you have made Adjustments<sup>1</sup> or incorporated support within quality differentiated teaching practice for each student. This should cover a **minimum period of 10 weeks of school education (excluding school holiday periods), in the 12 months preceding the national data collection.**<sup>2</sup>



<sup>1</sup> For information about Adjustments see the resource '[Strategies to Support Decision Making](#)'

<sup>2</sup> The section on '[Do you have evidence to support the student's inclusion in the data collection](#)' has information on the 10 week period

<sup>3</sup> The '[level of Adjustment provided to the student](#)' descriptors document has information on the four levels of Adjustment